

kalahari.net ring sizer

Print this page. For more accurate printing results:

Make sure that you do not have "Shrink oversized pages to fit paper size" or "Expand small pages to paper size" selected in your print dialog box.

Happy with your printout?

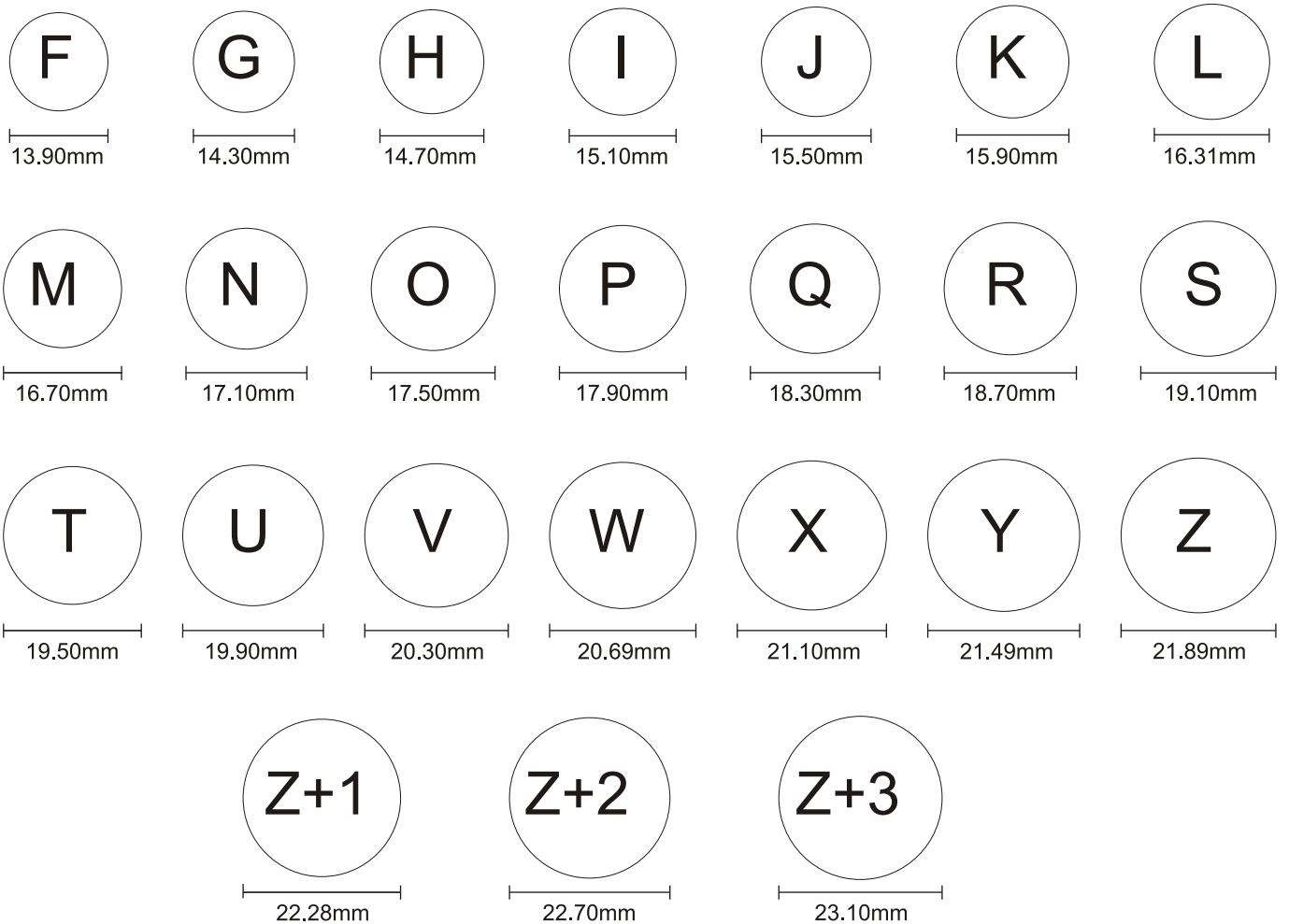
Make sure that your ring size guide printed correctly by measuring this line. 

If it's 10mm on your ruler you are ready to go ahead and calculate your size below.

Method A

Place any ring that fits you over one of the circles below, ensuring the inside of the ring lines up with the outside of the circle.

Please note: If you find that you are between sizes, always order the larger size



Method B

1. Wrap a piece of string or a strip of paper around your finger.
2. Mark the point where the two ends meet.
3. Measure the string or paper against a ruler to get the circumference of your finger.
4. Use the chart below to determine your ring size.

Finger circumference (mm) - Ring Size

37.8 - A	44.8 - F½	51.9 - L½	58.9 - R	65.9 - W½
38.5 - A½	45.5 - G	52.5 - M	59.5 - R½	66.6 - X
39.1 - B	46.1 - G½	53.1 - M½	60.2 - S	67.2 - X½
39.7 - B½	46.8 - H	53.8 - N	60.8 - S½	67.8 - Y
40.4 - C	47.4 - H½	54.4 - N½	61.4 - T	68.5 - Z
41.0 - C½	48.0 - I	55.1 - O	62.1 - T½	69.1 - Z½
41.7 - D	48.7 - J	55.7 - O½	62.7 - U	70.4 - Z1
42.3 - D½	49.3 - J½	56.3 - P	63.4 - U½	71.7 - Z2
42.9 - E	50.0 - K	57.0 - P½	64.0 - V	72.3 - Z3
43.6 - E½	50.6 - K½	57.6 - Q	64.6 - V½	73.6 - Z4
44.2 - F	51.2 - L	58.3 - Q½	65.3 - W	